

Transform your WAN

Effortless control and performance with our fully managed, application-aware SD-WAN solution.

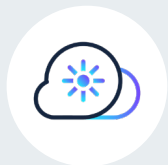
Secure and flexible high-performance connectivity

Our Managed SD-WAN solution provides private, flexible, global connectivity, ensuring mission-critical apps have the bandwidth and security they need, all managed through an easy-to-use portal.

We are your gateway to the digital world, combining:

- **Local internet access:** We manage the relationship with local ISPs, making life easier for your business
- **Extensive peering:** Our Tier 1 IP network puts you one hop away from the world's leading cloud and SaaS providers
- **Secure cloud access:** Private high-speed connections to hyperscalers via access to 200+ cloud on-ramps worldwide

Reasons to choose PCCW Global's **Managed SD-WAN solution**



Seamless cloud and SaaS access: Ensures easy and fast implementation - with no code required.



Simple management: Easily control your entire WAN via a single portal.



Flexible hardware options: Partnering with leading vendors, we bring you cost-competitive, end-to-end SD-WAN solutions.



Global gateway presence: With a vast international gateway footprint, our solution guarantees global, high-performance connectivity.

Access to a **global cloud ecosystem**

We offer private and on-demand connections to the world's leading cloud providers via 200+ cloud on-ramps.



Managed SD-WAN **features** —

Fast

- Supports up to 10 Gbps per connection for fast and reliable performance.
- Integrated with our Tier 1 IP Backbone (AS3491).

Flexible

- Contracts start at 12 months offering you flexibility to scale as your needs evolve.
- Choice of leading solutions from Fortinet, Velocloud, Cisco, SilverPeak or bring-your-own.

Global reach

- With 20 gateways in 15 countries, our SD-WAN solution provides robust international connectivity.
- China compliant and deployed over 8000 endpoints in country.

A trusted provider

- MEF certified with an AAA rating, meeting the highest global technology standards.
- SLAs backed by 99.99%+ uptime ensuring exceptional reliability.

Check the performance of **our IP network**



How our solution can help you —



Global Managed
Multi-SD-WAN



Enhanced network
performance and
access



Cost-efficient and
flexible OPEX offering



Service bundling with
cloud and security
solutions



SLA-backed services



Cloud and internet
migration



Global cross-border
gateway solution

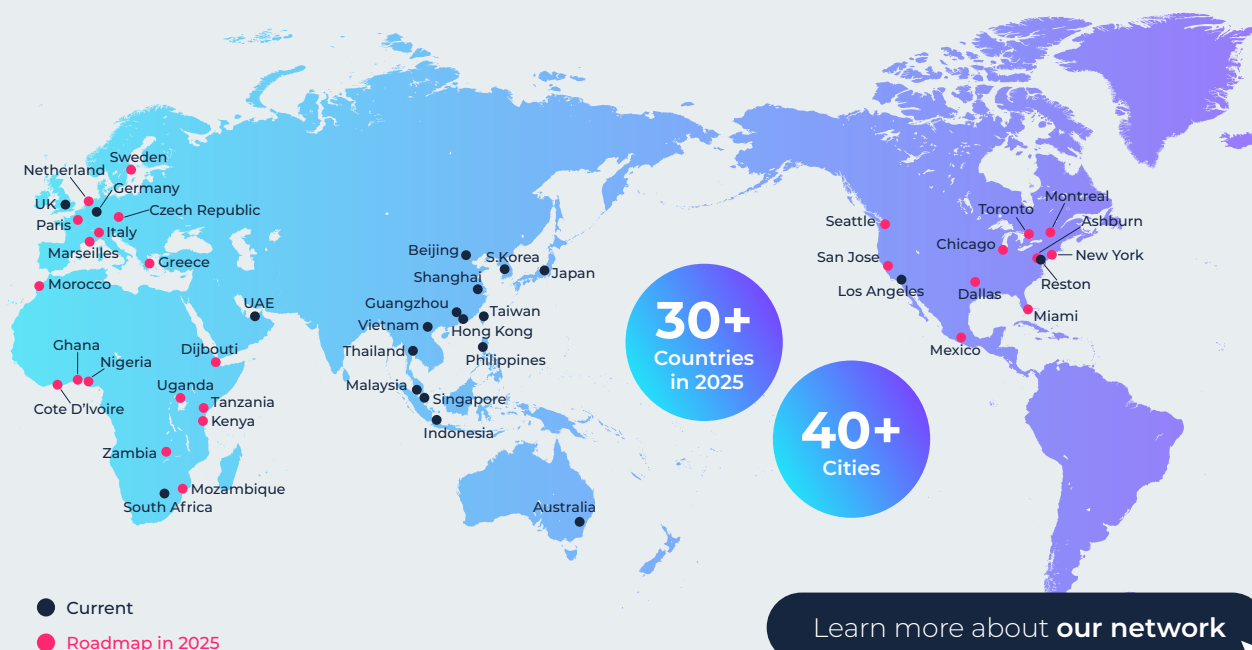
Our Managed SD-WAN solution is ideal for:

- **Expanding your global reach:** Extend your digital infrastructure into new markets across Asia, Middle East and Africa.
- **Upgrading or enhancing your existing SD-WAN:** We help enterprises with their upstream connectivity and underlay for SD-WAN.
- **WAN transformation for wholesale buyers:** We help carriers and service providers deliver end-to-end connectivity for their end customers.

PCCW Global offers a full suite of managed connectivity services.
Click here to discover how we can support your business.

Our SD-WAN gateway coverage —

Enabled by a global IP network and on-demand platform



Available SD-WAN solutions —



Fortinet: Ideal especially for enterprises planning to evolve toward a SASE solution over time.



Velocloud: Market-leading capabilities for granular traffic engineering. Designed to integrate easily with other VMware products.



Cisco: A recognised and trusted brand in networking. Ideal if you're already a user of Cisco hardware.



Aruba SilverPeak: All-around contender and very capable feature-set - currently available via re-sale only.

Elevate your connectivity with Console Connect —



Streamline connectivity across your digital ecosystem.

By connecting your WAN with Console Connect you can access global cloud services and data centre locations.

[Learn more](#)

Additional security services —



Protect your sensitive workloads by bundling our Managed SD-WAN solutions with the following services:

- **SASE:** Seamless security and high-performance connectivity across your network.
- **Anti-DDoS:** Agile and rapid protection against DDoS attacks, under budget.
- **Managed Firewall:** Reduce time and complexity with firewall maintenance.

[Learn more](#)



Talk to us

Australia

Level 3 | 200 Mary Street | Brisbane QLD 4000 | Australia

australia@pccwglobal.com

France

2/F 16 rue Washington | 75008 Paris | France

europe@pccwglobal.com

Greece

268 Kifisias Avenue | Chalandri, Athens | Greece

europe@pccwglobal.com

Germany

Schillerstr. 31 | 60313 Frankfurt/M. | Germany

europe@pccwglobal.com

Hong Kong

20/F, Telecom House | 3 Gloucester Road | Wan Chai | Hong Kong

hongkong@pccwglobal.com

Japan

3/F Marunouchi Mitsui Building | 2-2, Marunouchi 2-chome, Chiyoda-ku | Tokyo 100-0005 | Japan

japan@pccwglobal.com

Singapore

6 Temasek Boulevard | #41-04A/05 | Suntec Tower Four | 038986 | Singapore

singapore@pccwglobal.com

South Africa

Building 12 | 1 Woodmead Drive | Woodmead 2191 | Johannesburg | South Africa

africa@pccwglobal.com

UAE, Dubai

Office 504 & 505 Level 5 | Arjaan Business Tower | Dubai Media City | Dubai

mena@pccwglobal.com

United Kingdom

7/F, 63 St. Mary Axe | London, EC3A 8AA | United Kingdom

europe@pccwglobal.com

United States

475 Springpark Place | Suite 100 | Herndon | VA 20170 | USA

usa@pccwglobal.com

Let's stay connected!

We'd love to keep the conversation going —
your insights matter to us. Let's stay connected!

